



focus on essentials

# Infor ERP XA: Project Manufacturing

## Overview:

ARE WE MAKING MONEY ON THIS PROJECT? What are our costs to-date? What are our estimates? Questions such as these can be answered quickly and thoroughly with Infor ERP XA Project Manufacturing.

Project Manufacturing is an extension of the cost tracking capabilities that are an integral part of the Infor ERP XA operational modules. In short, Project Manufacturing collects end-to-end project costs.

Furthermore, Project Manufacturing can organize these activities into a database that is designed to recognize the project's cost reporting structure and elements.

Advantage? For one, this requires no extra transactions to generate project costs and two, because such costs are directly tied to real manufacturing activities.

Since the cost collection and reporting requirements of make-to-order manufacturing companies such as Defense, Aerospace and Project Manufacturers are as extensive as they are tedious, it is necessary for Project Manufacturing to grant the user complete and total access to detailed information regarding project costs. And because projects can be very complex, Project Manufacturing allows the definition of multi-level project structures (Work Breakdown Structure). This structure is hierarchical. Therefore costs can be "rolled-up" from the lowest level of detail into progressively higher level summaries. In addition, there are unlimited material labor and overhead categories and full detail of hours and cost is available at each and every level.

Project Model

Company

Project

Project Line Item

Project Phase

Project Work Order

Project Cost Element

Project Cost Detail



focus on essentials

**Features :**



**BUSINESS**

**OBJECTIVES :**

Accumulate and manage real-time Project Costs at Standard, Average or Actual Costs.

Include Post Sales costs such as installation and repairs in Project Costs with Infor ERP XA Service Management.

**Drill-Down** - The new robust Power Architecture provides an intuitive, user-friendly method of viewing inquiries.

**Unlimited Cost Elements** - You can gather an unlimited number of user-defined material, labor, and overhead cost elements.

**Real-time** - Costs associated with projects are updated immediately and are easily viewed on-line.

**Year-end Overhead Adjustment** - Project Manufacturing's flexible overhead design allows unlimited rates by cost element. In addition, an adjustment run option at year-end allows you to recalculate all posted overhead rates for that fiscal year.

**Operational Costs** - Project Manufacturing collects ACTUAL costs directly from Infor ERP XA manufacturing orders, that way labor and overhead exactly match what is applied to the order. In turn, purchased parts can be charged to a project at actual cost.

**Period, Fiscal, and Inception-to-Date** - Project Manufacturing has industry leading visibility six ways. For all levels in the Project Model costs and hours are accumulated for the Current Period, Fiscal Year and Inception-to-Date.

**Actual vs. Estimates**

This allows you to track your estimated expectations with your actual performance. This helps you to better estimate your future transactions.

**Trace costs**

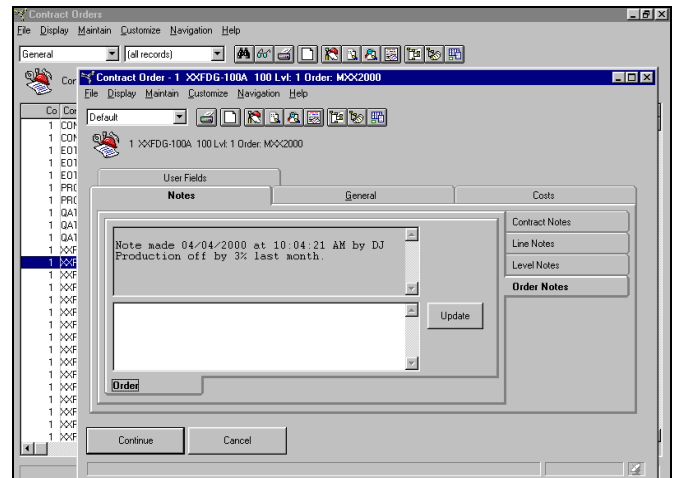
- You may trace your costs back to the original transactions through the easy drill-down Project Reporting Structure (model).

**Costs and hours**

**rolled-up** - Provides full, in-depth detail (Material, Labor, and Overhead breakdown) at all reporting levels throughout the Project Model.

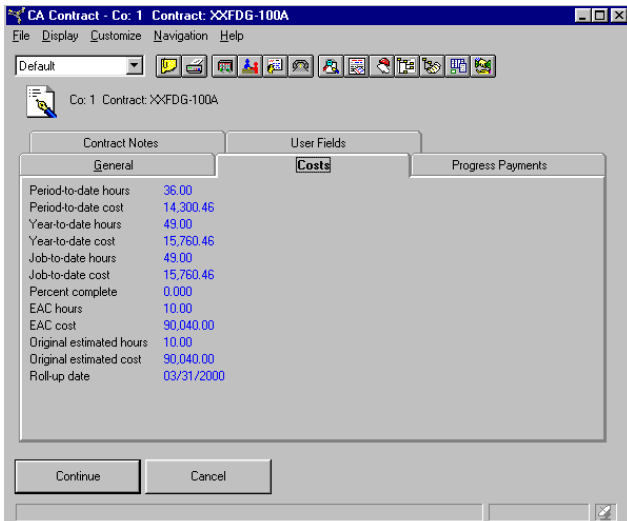
**Project Inventory Segregation** - Working in conjunction with project costing, it is easy to establish separate project Inventory for clear accountability of physical inventory assignable to a project.

**Post Sales and Service Costs** - If Infor ERP XA Service Management is installed true post sales costs such as installation and repairs can be accumulated in the project costs; providing true end-to-end visibility of project costs.





focus on essentials



**User Notes** - The flexible note-taking ability helps you retain specialized comment information about a customer and their projects, lines, levels, and orders.

**User-Defined Estimate Period** - Allows you to define your own "period of time" in order to maintain your costs. These costs are kept even after a month end close to allow you to view past details.

**Workfile Extract** - This program is a powerful tool for exploring how project costs can be incurred under differing overhead pools. With the ability to select multiple overhead pools to run a cost report, you can explore "what if?" scenarios relative to proposed production scenarios against long-term projects.

**Export Data** - Do you need to evaluate your data using Microsoft Excel, Access or another spreadsheet program? The reports accessed through Project Manufacturing enable results to be easily migrated to a spreadsheet or word processor format for further analysis and/or manipulations.

## Project Manufacturing Benefits:

### ➔ BENEFITS:

Fully Integrated to Infor ERP XA applications, Project Manufacturing eliminates redundant and inaccurate double entry of data.

Provides a real-time audit trail of project costs.

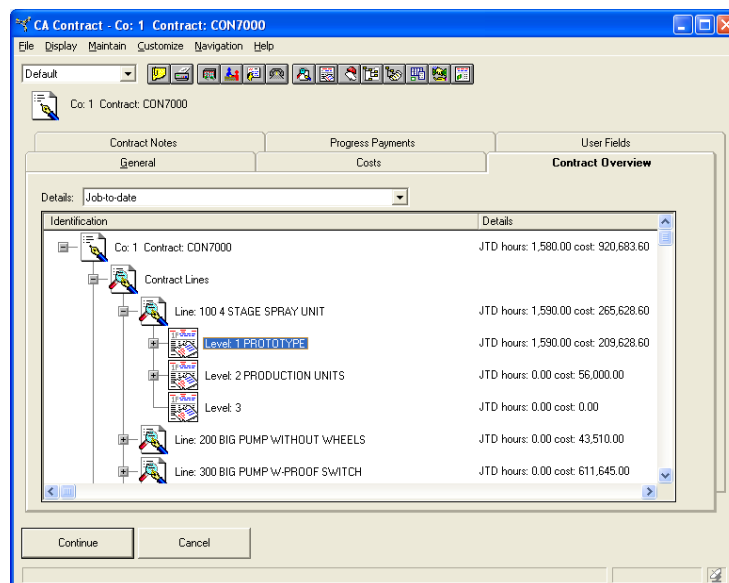
**Speed** - You don't have to wait for end-of-the-month, end-of-the-week, or batch overnight runs to collect the costs to the project. Project Manufacturing is updated at the same time as manufacturing order records and material issues from stock are applied at the same time the transaction register is produced.

**Flexibility** - All Project Manufacturing costs are posted in real-time to the project model, (the user-defined hierarchical structure) for cost reporting. Costs are "rolled up" from the line level elements, to project lines, and to the project totals. Data is available (material, labor, and overhead breakdown) at all levels of detail.

**Increases Productivity** - The customizable and easy-to-use PowerLink architecture provides quick, easy access to Infor ERP XA data with "drill-down" operation to increasingly detailed levels.

**Saves Time** - Reduce your project creation time and effort by integrating Project Manufacturing with Infor ERP XA Customer Order Management (COM) or **Customer Service Management (CSM)**.

**Eliminates Redundancy** - Cost transactions that are already occurring in the various Infor ERP XA modules will be updated in the Project Model automatically in real-time!





focus on essentials

[www.infor.com](http://www.infor.com)

Infor Global Solutions  
13560 Morris Road  
Suite 4100  
Alpharetta, GA 30004  
Phone: 678-319-8000  
Fax: 678-393-5001