



## Manufacturing Execution System

### Introduction to MES - What does it mean?

A Manufacturing Execution System (MES) is a dynamic information system that drives effective execution of manufacturing operations. Using real-time, accurate data, an MES guides, triggers, and reports on plant activities as events occur. MES software functions manage production activities from point of order release into manufacturing to point of product delivery into finished goods.

The mission statement of an MES deployment could be “to provide timely information access to plant associates in an actionable format, empowering the manufacturing enterprise to meet its goals”.

In short, it provides immediately usable information to the right people at the right time to help them make timely, well-informed decisions.

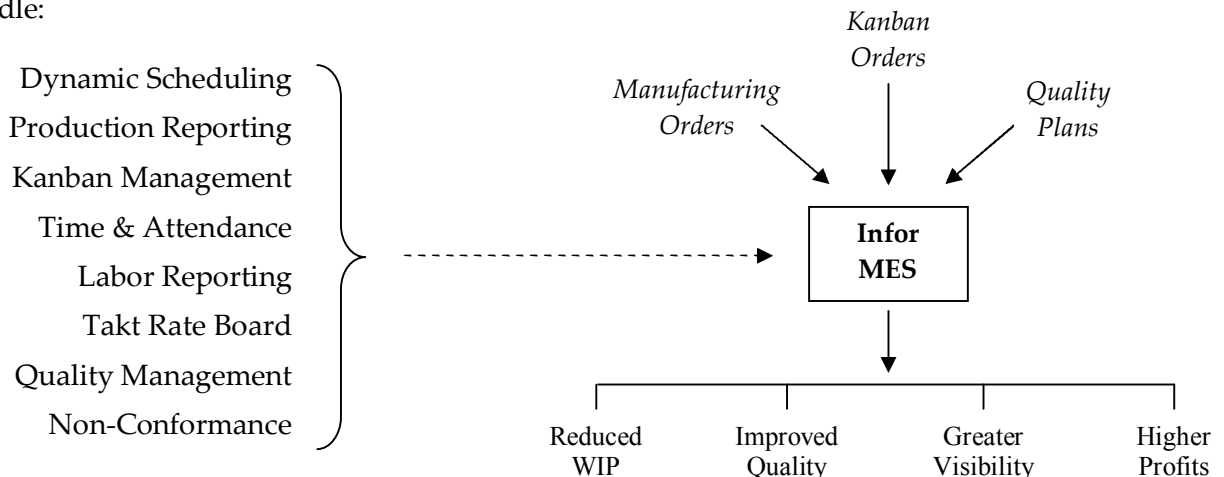
### Introduction to Infor MES

Infor facilitates MES with the Infor ERP XA MES Suite. The MES Suite includes three modules – Manufacturing Data Collection and Communication (MDCC), Lean Execution and Planning (LEAP), and Quality Management (QM).

The MES Suite has been built upon years of discrete manufacturing experience, and leveraging data collection, quality and Lean manufacturing best practices.

The MES Suite delivers immediate business impact to your enterprise, with greater shop floor control, seamless collaboration and increased traceability of your manufacturing process.

Infor MES allows enterprise-wide access to real-time manufacturing information and is designed to handle:



*“Visibly Better Execution”*



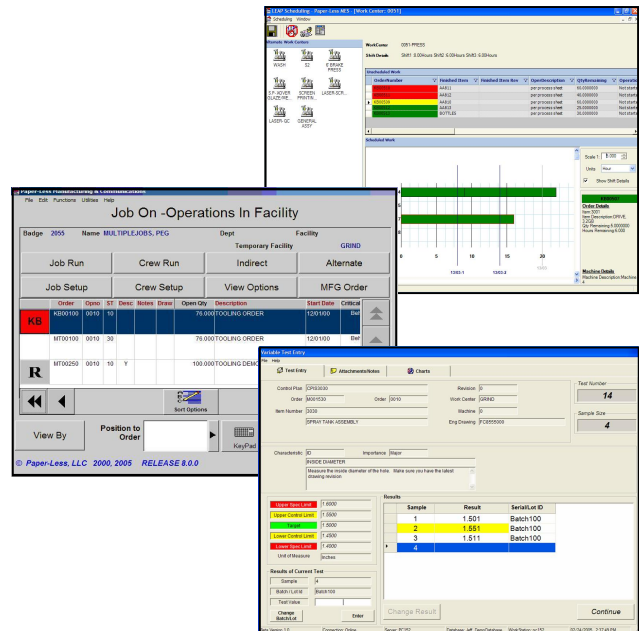
# MES Suite

Manufacturing Execution Software for Infor XA

## Manufacturing Execution System

### Business Benefits include:

- ✓ Real-time production reporting
- ✓ Shorter manufacturing cycle times
- ✓ Reduced variability
- ✓ Faster inventory turnover and lower in-progress inventories
- ✓ Higher return on operational assets
- ✓ More on-time deliveries with better quality and fewer defects
- ✓ Improved customer satisfaction
- ✓ Improved gross margins and enhanced cash flow...



### Value Statements

"...The MES is the vital link of our supply chain, providing an automated feed between upper-level enterprise resource planning (ERP) and manufacturing resource planning (MRP) systems and the plant floor control systems, coordinating both inbound and outbound supply chain logistics of manufacturing."

"An MES creates a series of synchronized and coordinated information links that results in tighter control over manufacturing activities and, ultimately, in first-time, end-product quality and production repeatability."

"By automatically tracking and collecting data and documenting each step in the manufacturing process from raw materials to finished goods inventory, the MES provides the ultimate foundation for a quality program, fulfilling ISO 9000 compliance requirements even when problems occur along the way."

"In fact, an online, integrated MES satisfies the information requirements of almost all of ISO 9000's quality elements. It essentially automates any quality system's documentation requirements..."

*"Visibly Better Execution"*